

Specialization in the BBE Program

Interactions of Economy and Society



Coordinators: Sabine Frerichs, Markus Lampe



Smallest Dog in the Pack

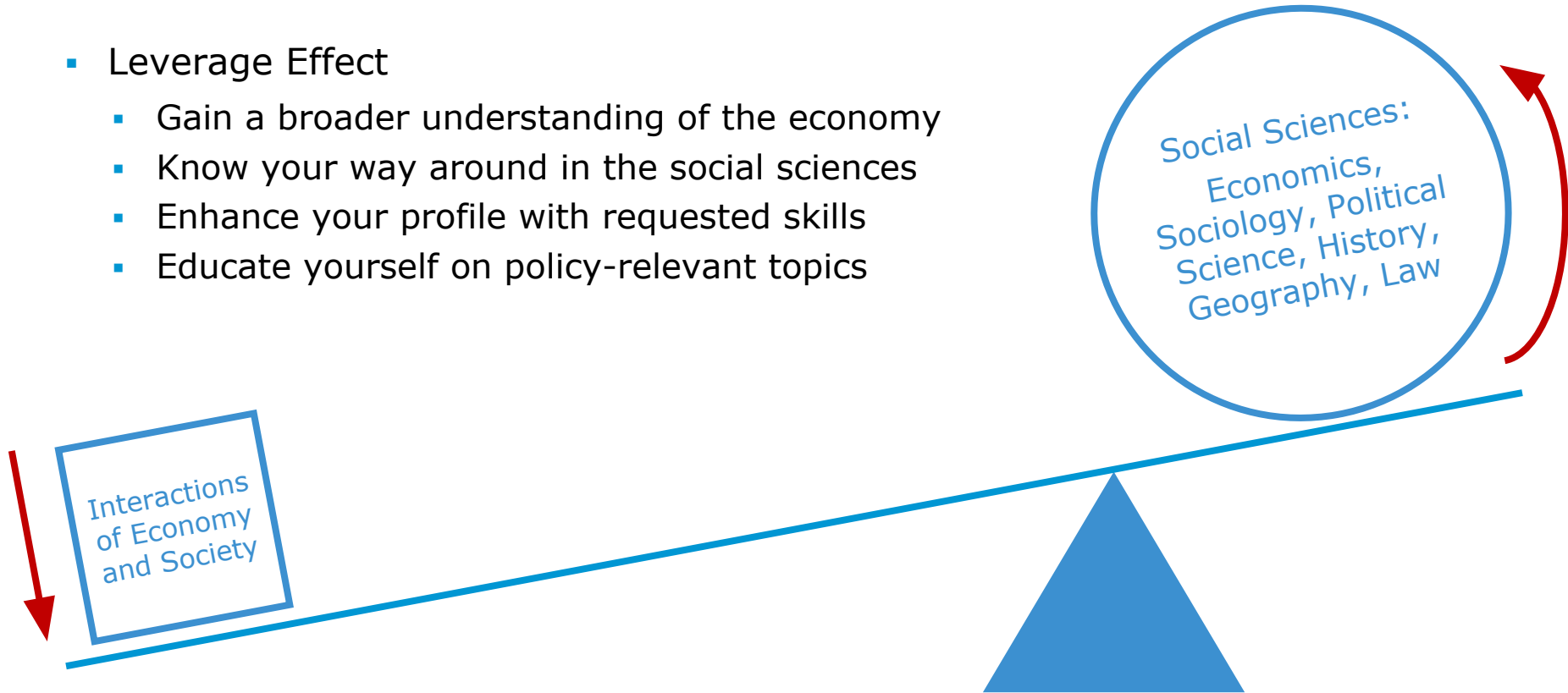
- Interactions of Economy & Society
 - Specialization in the BBE program
 - Open to ten BBE students per year
 - At present 'first come, first served'
- Course offer by the Department of Socioeconomics
 - Teachers from different disciplines
 - Students from different programs
 - Interdisciplinary perspectives
- We are small and a little bit different



(Eight is still enough dogs, by Carterse, [CC license](#))

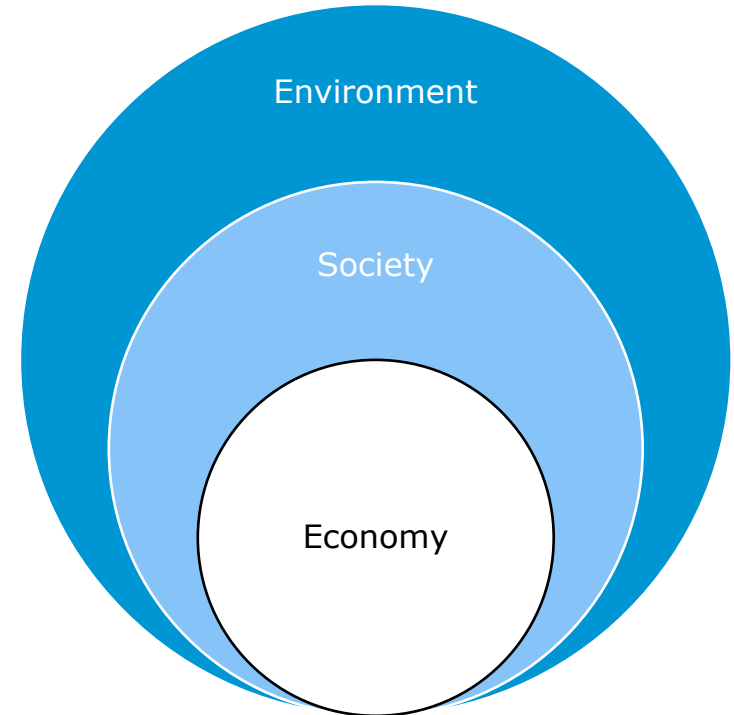
Small But Powerful

- Leverage Effect
 - Gain a broader understanding of the economy
 - Know your way around in the social sciences
 - Enhance your profile with requested skills
 - Educate yourself on policy-relevant topics



Substantive Focus

- The economy can only be fully understood if economic actors and their decisions are embedded into society and its natural environment.
- This specialization brings interactions of economy and society to the fore, which includes aspects of law and politics, history and culture.
- It offers an introduction into the broad range of theories and methods in the social sciences, which complement standard models from economics.



Student Profile

- The specialization relates to other courses in the BBE program
- In the introductory phase:
 - 'Contemporary Challenges in Business and Economics'
- In the main program phase:
 - 'Foundations on Socioeconomics'
 - 'History of Economics and the Economy'



- If you did well in these courses, were interested in the topics, and enjoyed the discussions, this specialization may be just right for you!
- The specialization particularly targets students who want to gain a better understanding of the variability of economic behaviour and development.

Course Program

Course I
Social Science
Theories

Course II
Empirical Social
Research I

Course IV
Economy and
Society I

Course III
Empirical Social
Research II

4 x 5 ECTS = 20 ECTS

Course V
Economy and
Society II

No Sequencing

- Courses I to V do not build on each other in the way that completing one is prerequisite of attending the other.
- Hence, all courses can be attended and completed independently from each other, notwithstanding the consecutive numbering.
 - This also applies to the courses Empirical Social Research I and II (Courses II and III) and Economy and Society I and II (Courses IV and V).
 - Again, the numbering implies no sequencing. Instead, the courses can also be attended and completed simultaneously or in reverse order.

Social Science Theories

- Course I:
 - Social Science Theories:
 - “Social Science Theories: Modern Developments”
 - Course offered every summer term

- Alternative theoretical perspectives on social and economic phenomena



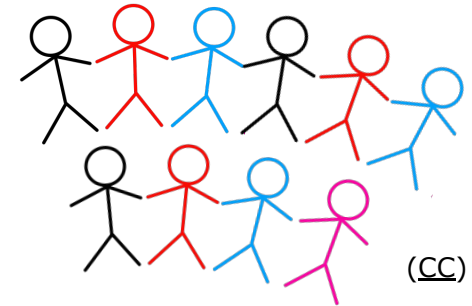
Empirical Social Research I und II

- Course II:
 - Empirical Social Research I:
 - “Introduction to Empirical Social Research”
 - Course offered each term
- Course III:
 - Empirical Social Research II:
 - “Empirical Quantitative Research”
 - Course offered every winter term
- Empirical research designs, focus on quantitative research methods



Entrance Requirements

- This specialization is open to BBE students only
 - BaWiSo students can select economics/socioeconomics as a study branch and then specialize in socioeconomics to access the course program.
 - BBE students join English-taught courses in the BaWiSo program that are also open to incoming students creating an international learning environment.
- Maximum of ten students, five per semester
- No entry exam :) – but you should meet the profile
- Available slots allocated on 'first come, first served' basis
 - Students will be accepted in the order of their registration.
 - For further information on the different steps in the registration process, see the syllabus of 'Access to Specialization: Interactions of Economy and Society'.



- Registration for the 'access to specialization' course is a prerequisite to complete the specialization.
 - There is no other way to enter the respective courses ('no backdoor').
- After successfully registering for the 'access to specialization' course, you will be able to enroll for the course program on preferential terms.
 - There is fixed quota for BBE students (i.e., a number of guaranteed slots).
- Once accepted to the specialization, you can enroll for all the courses but you at least have to complete one course in the same term.
 - If you do not complete any course, your registration will be cancelled.

How to Complete the Specialization

- The specialization can be completed in two semesters.
 - This is possible no matter whether you start in winter or summer term.
 - See options 1 and 2 as recommended pathways in the following slides.
- All courses are accessible to beginners of the specialization.
 - There is no strict sequencing of the courses.
 - Different combinations are possible, also going beyond options 1 and 2.
- However, please note:
- Not all of the courses will be offered every semester.
 - This concerns course I and III and may also concern course IV.
 - In these cases, there are definite course offers once a year.

How to Complete the Specialization

Starting in Winter Term (option 1)

**Winter
term**

**Course II
Empirical Social
Research I**

**Course III
Empirical Social
Research II**

**Course IV
Economy and
Society I**

**Summer
term**

**Course I
Social Science
Theories**

**Course V
Economy and
Society II**

How to Complete the Specialization

Starting in Summer Term (option 2)

**Summer
term**

Course I
Social Science
Theories

Course II
Empirical Social
Research I

Course V
Economy and
Society II

**Winter
term**

Course III
Empirical Social
Research II

Course IV
Economy and
Society I

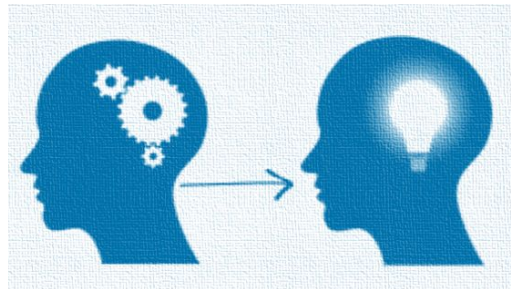
- Please contact us in the following cases:
 - Before going abroad
 - If you want to complete courses for the specialization during your exchange term, we can check beforehand which courses at your host university may be considered equivalent to courses in the specialization.
 - After coming back
 - If you have already completed courses at other universities which are similar to courses in this specialization, you can consult us about how best to include them in your application for credit transfer.

Survey Questions

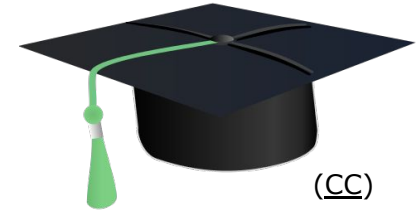
- My expectations regarding the contents / learning outcomes of this specialization were fulfilled.
 - The five courses included in the specialization were interrelated and complemented each other.
 - The topics/approaches/methods covered by the specialization increased my interest in this field.
 - Students from different backgrounds worked together in class and created a learning community.
 - The specialization makes a useful and/or meaningful addition to the BBE course program.
- (1) Strongly disagree
 - (2) Disagree
 - (3) Neither agree nor disagree
 - (4) Agree
 - (5) Strongly agree.
- Would you recommend this specialization to other students?
 - Yes
 - No

Learning Outcomes

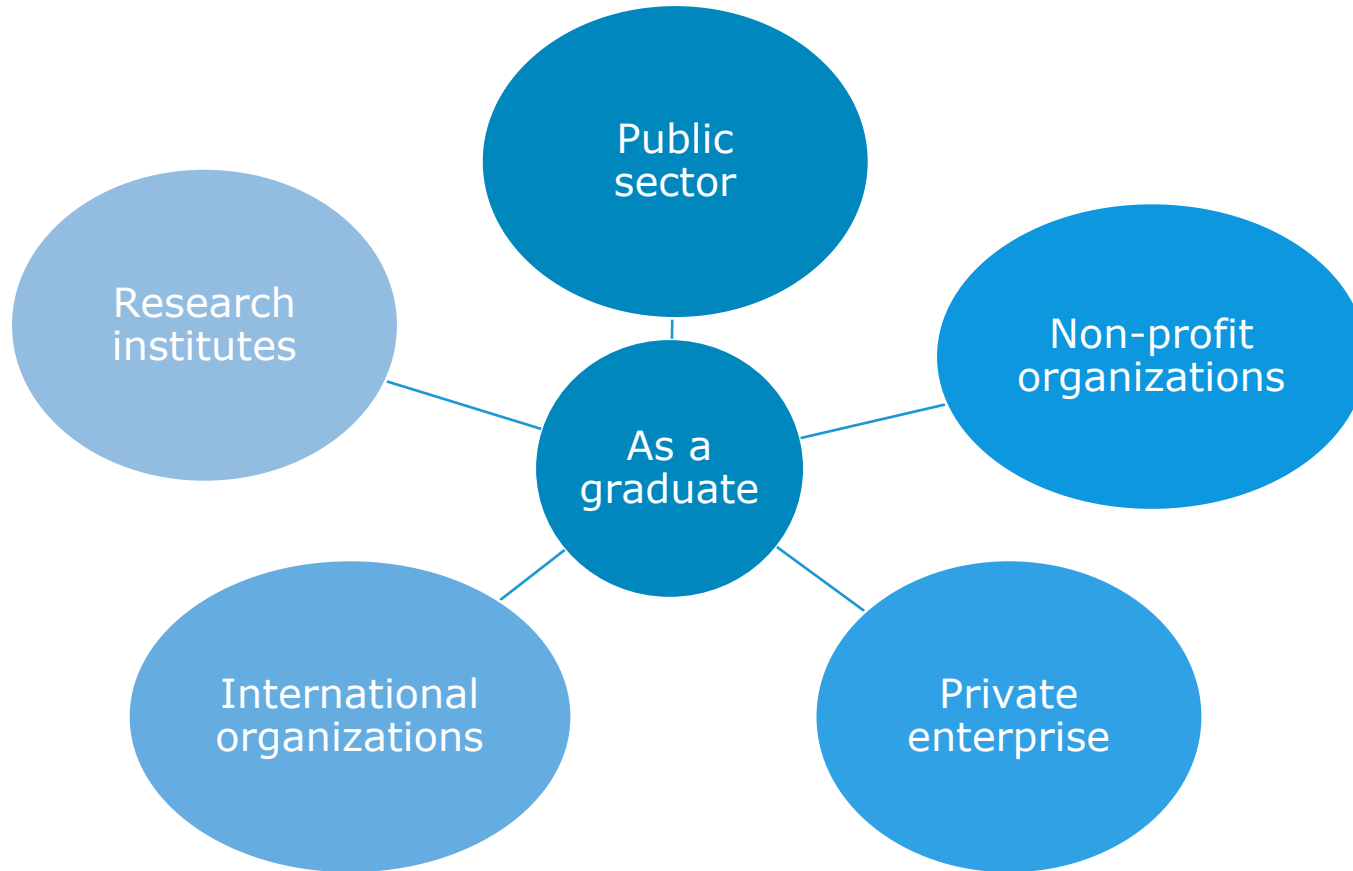
- This specialization provides a substantive qualification in social science theories and methods and their application to socioeconomic problems.
- By completing this specialization, students gain essential research skills in the social sciences, which are needed in many academic professions.
- Moreover, they will qualify for Master's degree programs combining economics with an interdisciplinary research and policy orientation.



- As broadly qualified economists
 - You will be able to work both in the public and private sector and advise practitioners and politicians.
 - You will form part of multidisciplinary teams that draw on a broad array of perspectives, approaches and methods.
 - You will contribute your share to addressing real-world problems and developing adequate solutions.



Career Prospects



Coordinators

You are welcome to contact us!



Univ.Prof. Dr. Sabine Frerichs
sabine.frerichs@wu.ac.at
+43 1 31336 5886



Univ.Prof. Dr. Markus Lampe
markus.lampe@wu.ac.at
+43 1 31336 5801