

SBWL Supply Networks and Services



Tina Wakolbinger
Institute for Transport and Logistics
Management



Institute for Transport and Logistics Management

Address: WU Vienna University of Economics
and Business
Welthandelsplatz 1
Building D1, Upper level 4
1020 Vienna

Tel.: 01-31336 4610 (office)

E-Mail: sekretariat.itl@wu.ac.at

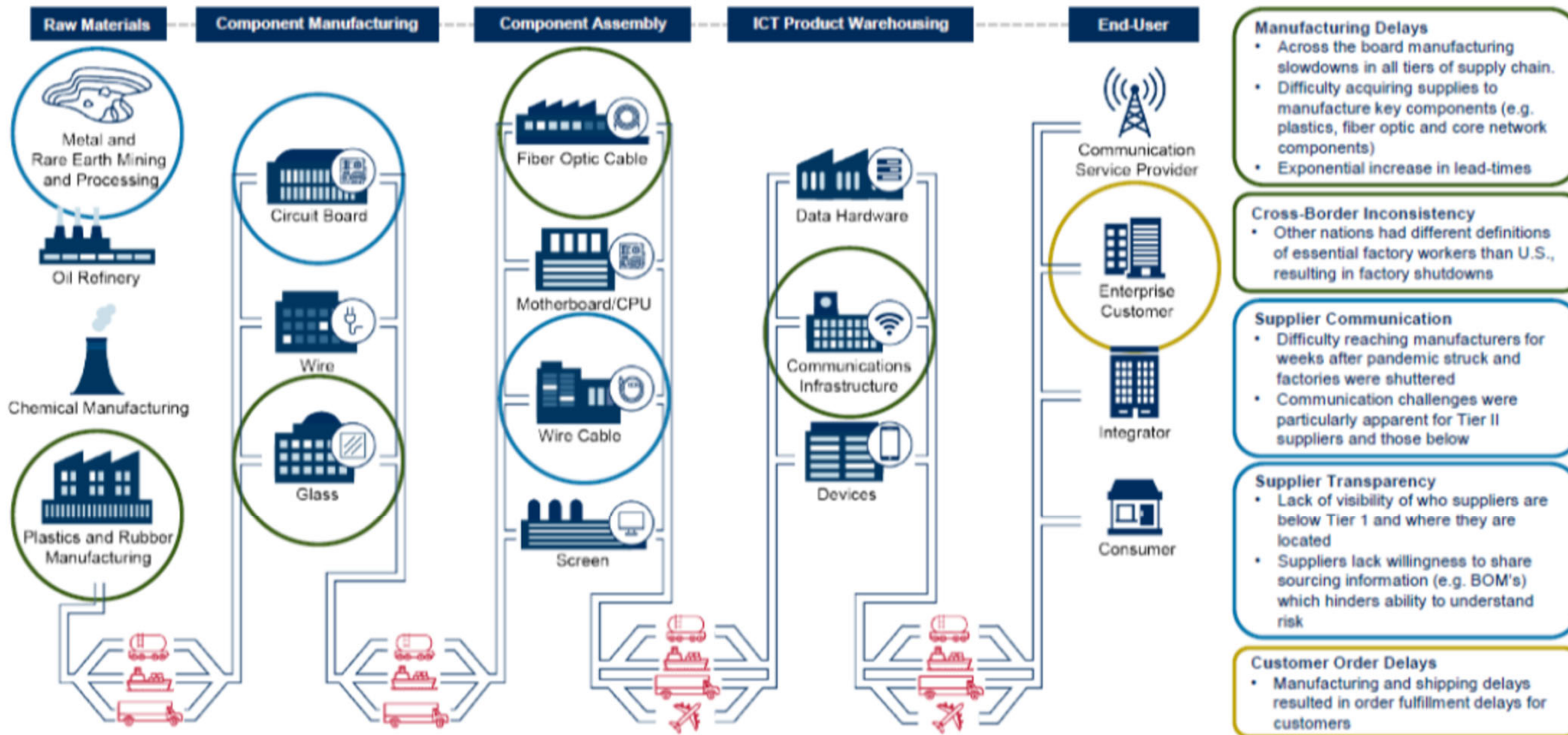
Head: Univ. Prof. Dr. Sebastian Kummer

Deputy Head: Univ. Prof. Tina Wakolbinger, Ph.D.



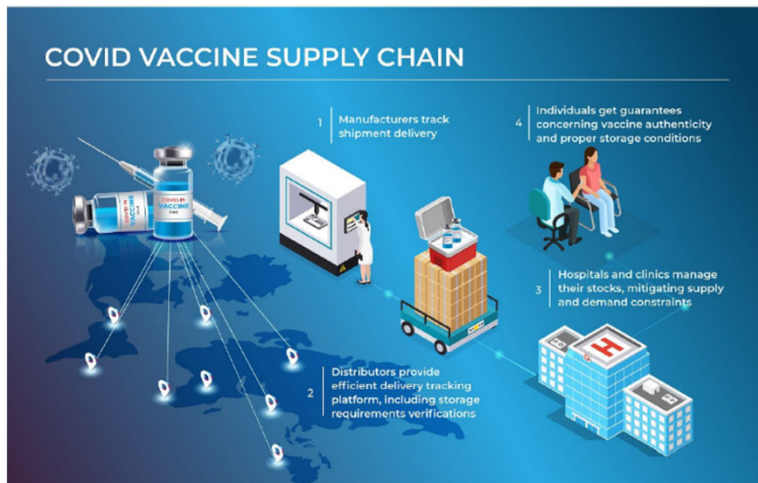
What is a Supply Chain?

- All stages involved, directly or indirectly, in fulfilling a customer request



Source: *Building A More Resilient ICT Supply Chain: Lessons Learned During The COVID-19 Pandemic*, ICT Supply Chain Risk Management (SCRM) Task Force's COVID-19 Impact Study Working Group (WG) 2020

Supply Chain Trends and Challenges



SBWL Orientation

- Complexity in supply chains is increasing due to globalization, urbanization, ecological and social challenges.
- The SBWL 'Supply Networks and Services' deals with models and tools to support decision making within companies and NGOs in the field of supply chain management. A specialization in the field of sustainable supply chain management or supply chain management for disaster relief is possible.
- In addition to numerous case studies and practical examples, the SBWL 'Supply Networks and Services' attaches great importance to a research- and method-oriented education of its students.

SBWL Supply Networks and Services

Course I: Introduction to Supply Chain Management
Course III: Supply Chain Modeling and Design
Course II: Analysis and Optimization of Distribution Networks

**Core
First Semester**

Course IV:
Humanitarian
Logistics

Seminar:
Humanitarian
Logistics

or

Course IV:
Sustainable Logistics

Seminar:
Sustainable
Logistics

**Elective
Second
Semester**

International case study competition HUMLOG and international recognition



QS Global Ranking

QS Business Masters Ranking 2025

WU Master in Supply Chain Management

- **Rank 1** in Europe
- Rank 2 globally

International experience and relevance of Supply Chain Management: Networks & Services

Company visits

Henkel, Summer Semester 2018



Rewe, Winter 2017



Post, Summer Semester 2017



Company presentations and networking opportunities in (e.g. Amazon, woom, ÖBB)

Job opportunities

The SBWL offers an excellent preparation for the Master program in Supply Chain Management at WU.

A strong demand exists in the area of Supply Chain Management, e.g.:

- Supply chain management in industrial, commercial and service companies
- Logistics companies
- Consulting companies in the field of Supply Chain Management

Our communication channels

Institute



Mailing list

[http://wu-lists.wu-wien.ac.at/
mailman/listinfo/sns](http://wu-lists.wu-wien.ac.at/mailman/listinfo/sns)



Website of the institute

<http://wu.ac.at/itl>



Institute for
Transport and Logistics
Management

Courses

CANVAS WU



E-Mails regarding specific
courses

firstname.lastname@wu.ac.at

Admission

- The SBWL starts each semester with up to 40 students.
- The formal requirements for admission to an SBWL at WU must be met.
- Admission to the SBWL requires the successful completion of the AG " Access to Specialization in Business Administration: Supply Networks and Services" (see WU Course Catalog).
- Admission to the SBWL is based on a motivation letter and the GPA.
- Students who have a "Very Good" or "Good" in the course "Procurement, Logistics, Production" (BLP) have automatically successfully completed the AG. The grade of BLP is automatically checked by the Institute.

Further information

- Information on the SBWL can be found at:
<https://www.wu.ac.at/itl/lehre/bachelor/sbwl/sbwl-supply-networks-and-services>
- If you have any questions about the SBWL Supply Networks and Services, please contact Doris Phiri at
sbwl-sns@wu.ac.at