

Urban and Regional Economics

Jürgen Essletzbichler*, **, ****Linda Li*, Stefanie Peer***, ****

*Institute of Economic Geography and GIScience

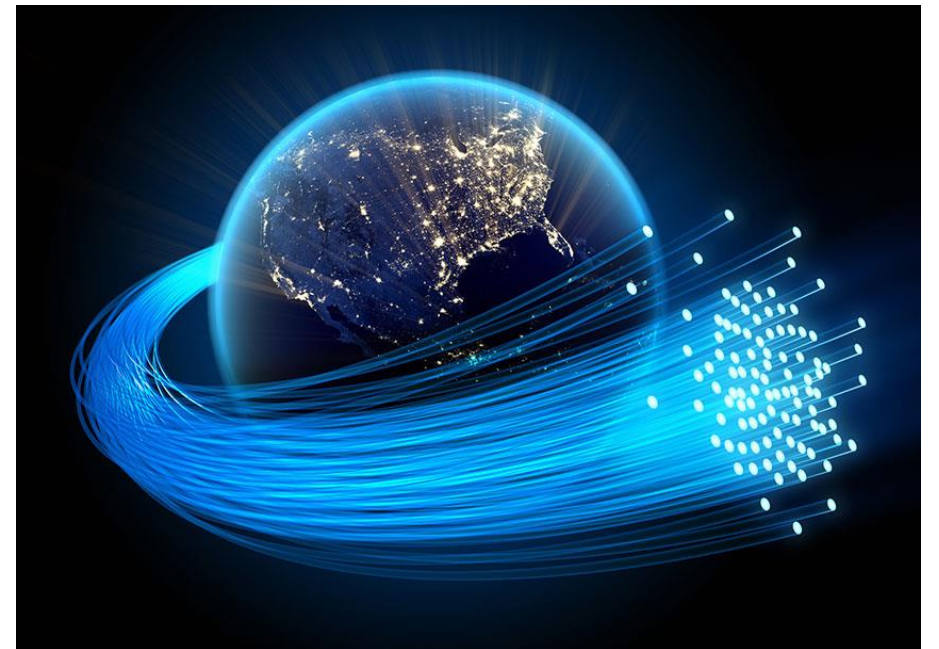
**Research Institute „Economics of Inequality“

***Institute of Multi-Level Governance

****Research Institute „Raum- und Immobilienwirtschaft“

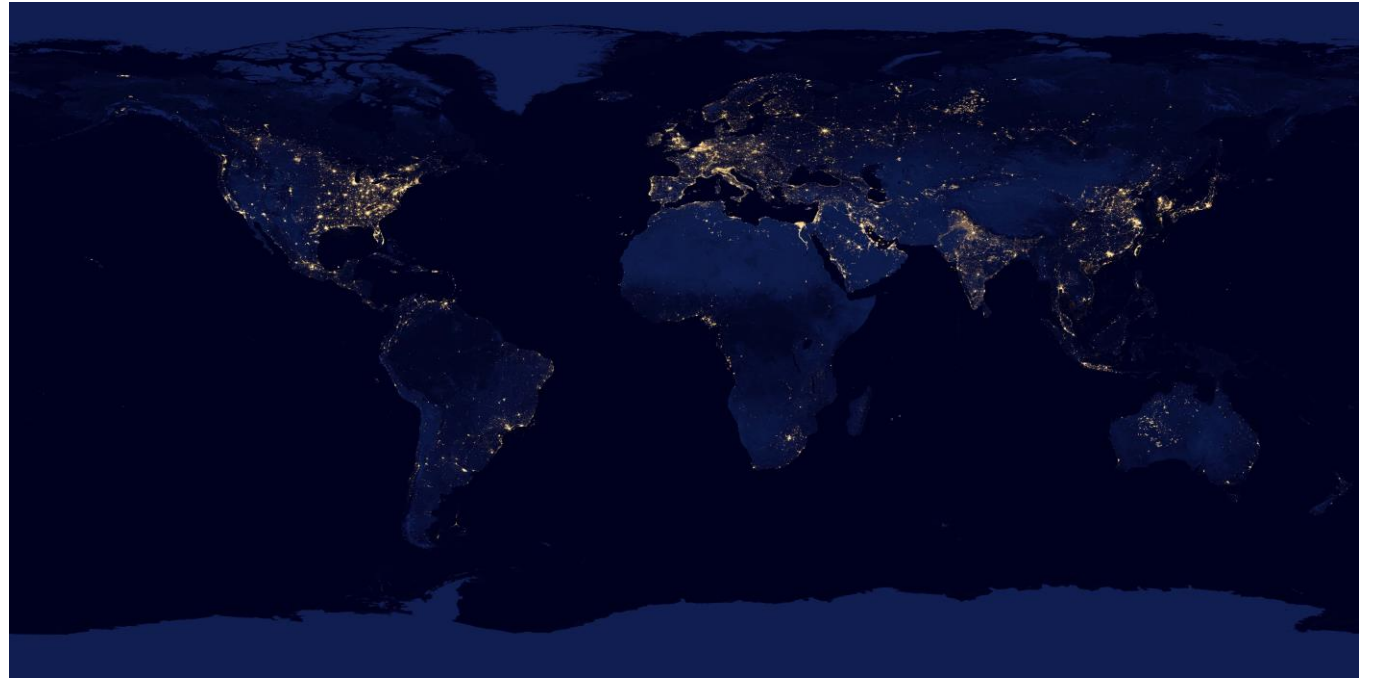
Space and economics

- Economic activity does not take place on top of the head of a pin
- The **cost of overcoming space** as barrier to profit generation -> investment in physical infrastructure -> overcoming spatial barriers
- Transportation, IT,
- „Second nature“ geography



Space and economics

- Production of place to generate profits → cities,...
- Cities as geographic concentrations of economic activity
- Spatial differentiation and regional development
- (Uneven) accessibility



Source: NASA and DMSP.

4 courses – 20 ECTS

- Course I: Introduction to Economic Geography (Jürgen Essletzbichler)
- Course II: Applied Economic Geography and Case Studies (Jürgen Essletzbichler, Linda Li)
- Course III: Regional Economics I (Stefanie Peer)
- Course IV: Regional Economics II (Stefanie Peer)

- Courses I+II take place in the summer semester
- Course III+IV take place in the winter semester

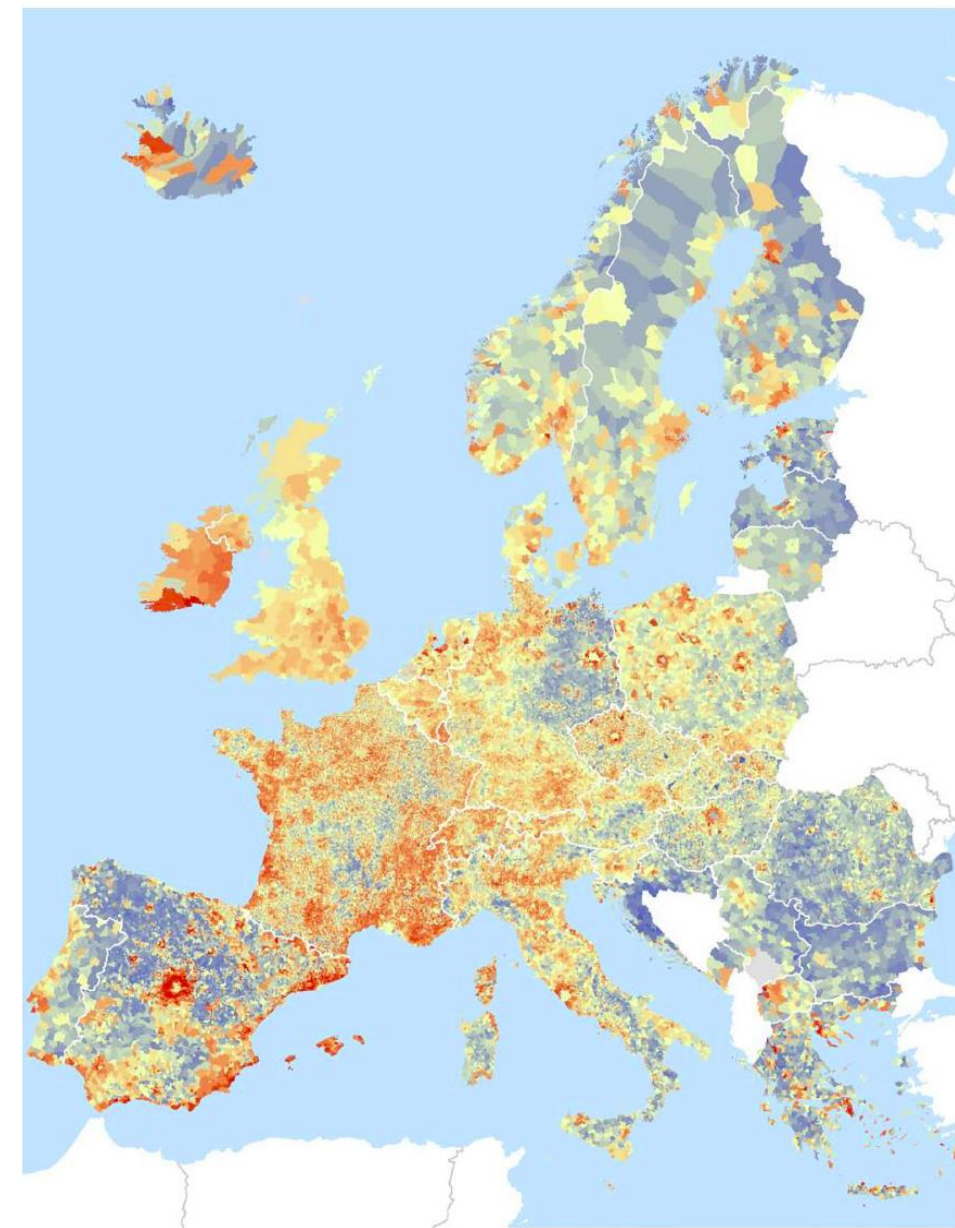
Course I: Introduction to Economic Geography

- Basic spatial concepts: location, proximity, territory, place, scale (eg. example facebook)
- The need to „eradicate“ distance -> Globalization
- Despite globalization -> urbanization (geographic concentration of people, firms, money,)
- Agglomeration economies
 - Matching, sharing, learning





Course II: Applied Economic Geography and Case Studies

- **Theoretical approaches** to regional economic development (how and why do cities and regions change over time)
 - Regional growth theory; Polarization theory; New Geographical Economics, Evolutionary Economic Geography;
- **Doing empirical research**
 - Work with spatially referenced data (Eurostat);
 - Geographic data analysis;
 - Mapping, describing, analyzing (spatial regressions)
 - Software: GeoDa
- How to read and **analyze academic papers?**
- How to **write a research report?**
 - Accession to EU and regional economic growth/decline in Eastern European regions
 - What explains regional unemployment?
 - Why do migrants move to particular regions?...



Annual Population Development in municipalities 1990 - 2010

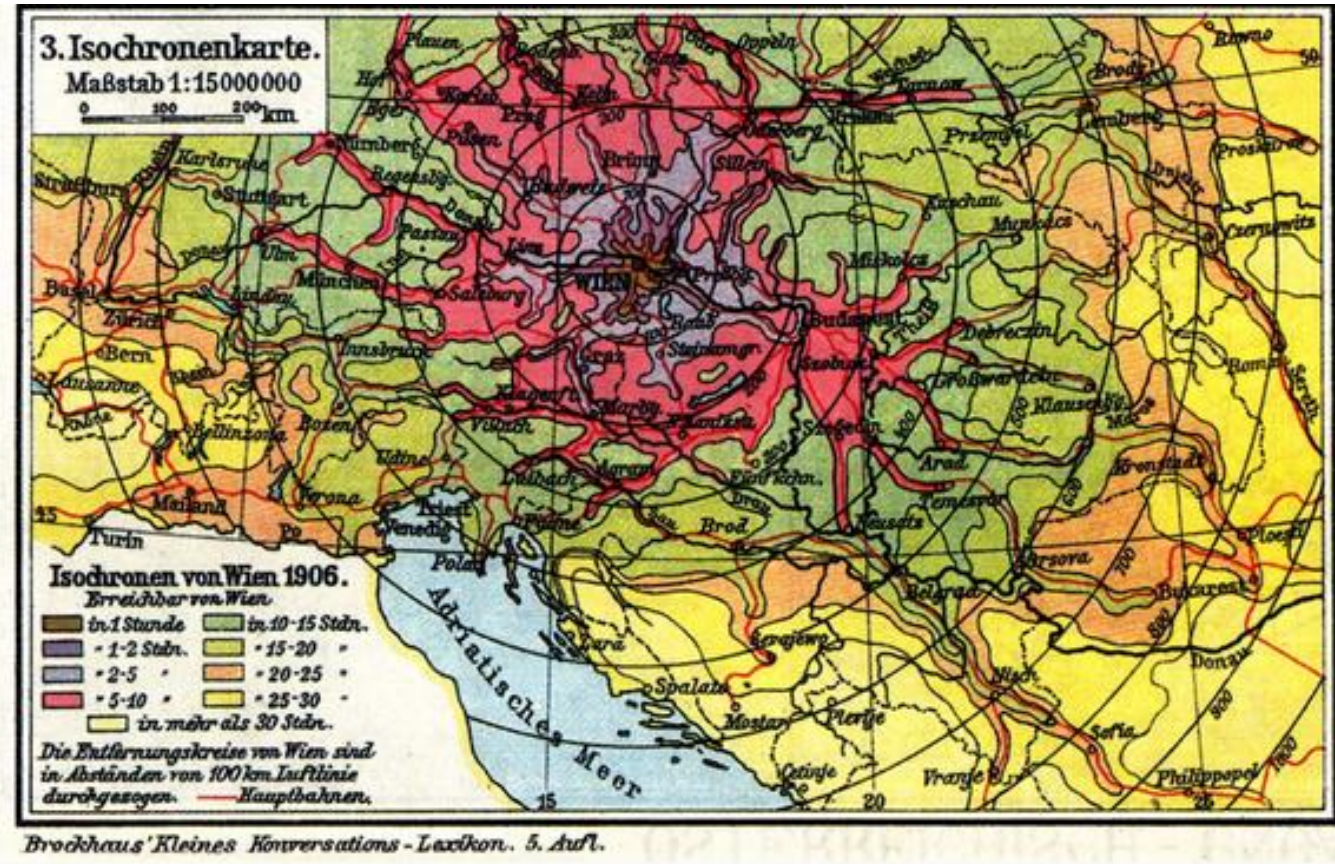
Strong population loss  Strong population growth
No Data 

Source: National Statistical Offices
Spatial level: LAU1/LAU2
Geographical Data: ESRI Data and Maps

Source: Wolff and Wiechmann 2018

Regional Economics I & II

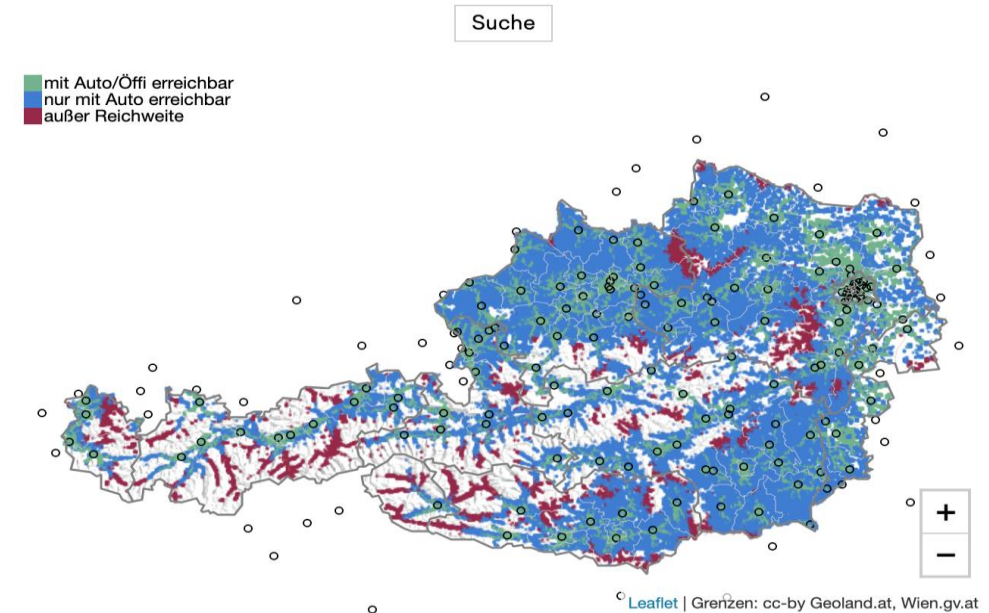
- Centered around the topic of **accessibility**
- Regional Economics I → Focus on **theory**
- Regional Economics II → Focus on **empirical applications**
- Only offered in English in the **fall/winter semester**
 - Recommended to follow both courses in the same semester



Regional Economics I – Main topics

- What is **accessibility**? How can it be measured?
- The role of accessibility for **location choices of households and firms**
- The trade-off between agglomeration economies and negative transport-related **externalities (congestion, noise, pollution)**
- **Regional, urban & transport policies**: place-based vs. space-blind
- How to **assess infrastructure investments** and their regional impacts?
- **Political economy** aspects related to regional & transport policies

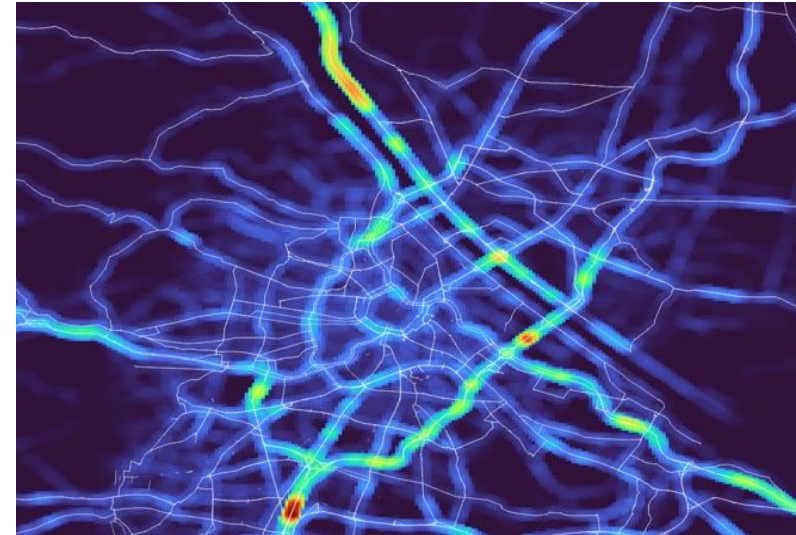
Auto vs. öffentlicher Verkehr: Mit welchem Verkehrsmittel innerhalb von 30 Minuten das nächste regionale Zentrum erreicht werden kann.



Source: [Addendum](#)

Regional Economics II – Main topics

- **Empirical methods and applications** in the field of regional and transport economics, including:
 - How to measure the **impacts of changes in infrastructure and accessibility**?
 - What factors **determine travel demand**? How do people decide whether to travel, where to travel, which transport mode and route to use?
 - What are the **social and private costs of transport** and how can they be derived?
 - **Empirical methods** (in particular, regression analysis and discrete decision models using STATA)
 - Application of the **methods to current topics**: financing of public transport, parking management, sustainable mobility, (tele)commuting, autonomous driving, car- & ride-sharing, e-mobility, etc.



MANY THANKS!!!

juergen.essletzbichler@wu.ac.at /// stefanie.peer@wu.ac.at